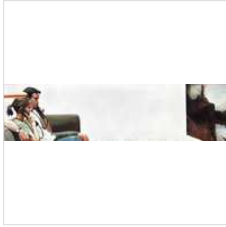


# The Corridors Gallery at Hotel Henry: A Resource:Art Project

## East Wing Guest Room Corridor



**BRUCE ADAMS**

Picture of People Sitting Before Painting (National Gallery, Washington, D.C.), 2005

Oil on canvas

24 × 96 in

61 × 243.8 cm

\$10,000

## West Wing Connector



**JOZEF BAJUS**

Big Black Composition, 2003

Paper, staples

36 × 36 in

91.4 × 91.4 cm

\$3,500

## West Wing Guest Room Corridor (over Fireplace)



**JOZEF BAJUS**

Evidence, 2016

Handmade paper, Sumi Ink, Staples, Mixed media

40 × 38 in

101.6 × 96.5 cm

\$5,500

## Outside of Lounge



**JOZEF BAJUS**

Fingerprint, 2015

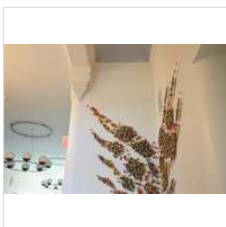
Paper, staples, mixed media

12 × 11 in

30.5 × 27.9 cm

\$1,600

## East Wing Guest Room Corridor



**JOZEF BAJUS**

Ivy, 2016

Felt, staples installation

\$8,700

**East Wing Connector**

\$5,500



**ROBERLEY BELL**

Other Landscape #17, 2014  
Mixed media

41 × 17 × 10 in  
104.1 × 43.2 × 25.4 cm

**East Wing outside of Lounge**

\$3,800



**ROBERLEY BELL**

Still Life #12, 2013  
Pigmented fiberglass, steel wire, porcelain flowers, wood shelf

18 × 18 × 14 in  
45.7 × 45.7 × 35.6 cm

**East Wing Connector**

\$5,500



**ROBERLEY BELL**

Still Life #21, 2016  
2016

62 × 11 × 11 in  
157.5 × 27.9 × 27.9 cm

**East Yellow Nook**

\$1,400



**AMANDA BESL**

June 16, 2016  
Oil on wood panel

11 × 14 in  
27.9 × 35.6 cm

**East Yellow Nook**

\$1,400



**AMANDA BESL**

out of time, 2017  
Oil on board

14 × 11 in  
35.6 × 27.9 cm

**West Wing Guest Room Corridor**

\$9,600



**AMANDA BESL**

Souvenir de la Malmaison, 2014  
Oil on wood panel

36 × 55 in  
91.4 × 139.7 cm

**West Wing Guest Room Corridor**

\$3,000



**AMANDA BESL**

still it's so much clearer, 2017

Oil on board

24 × 18 in

61 × 45.7 cm

**West Wing Guest Room Corridor (elevator)**

\$600



**IAN DE BEER**

Untitled, 2016

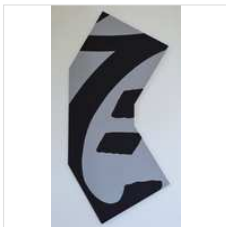
Enamel on linen

40 × 30 in

101.6 × 76.2 cm

**West Wing Guest Room Corridor**

\$750



**IAN DE BEER**

Untitled, 2016

Enamel on linen

40 × 24 in

101.6 × 61 cm

**Historic Staircase Landing**

\$8,000



**JACK DRUMMER**

Untitled (four panels), 1990-1999

Stretched and dyed rubber, paint

90 × 120 in

228.6 × 304.8 cm

**Historic Staircase Landing**

\$11,000



**JACK DRUMMER**

Untitled (three vertical panels), 2000-2012

Stretched and dyed rubber, paint

96 × 40 in

243.8 × 101.6 cm

**West Wing Connector**

\$2,800



**JACK DRUMMER**

Untitled, 2000-2012

35 × 45 in

88.9 × 114.3 cm

**East outside yellow nook**

\$450



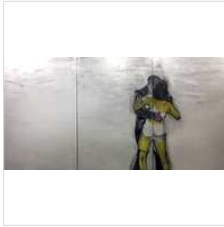
**JACKIE FELIX**

The Stage, 1990  
Aquatint on paper

16 × 22 in  
40.6 × 55.9 cm

**East Wing outside Lounge**

\$7,500



**JACKIE FELIX**

Untitled (Triptych), ca. 1980  
Oil on canvas

60 × 120 in  
152.4 × 304.8 cm

**East Wing (elevator)**

\$475



**DOROTHY FITZGERALD**

Lake Lines Series 3, 2016

**West Wing Guest Room Corridor**

\$5,200



**DOROTHY FITZGERALD**

Sturdy, Weathers Well, 2014  
Oil on masonite

48 × 48 in  
121.9 × 121.9 cm

**East Wing Guest Room Corridor**

\$13,800



**DOROTHY FITZGERALD**

They found the pike but it wasn't alone , 2015  
Oil, oil stick, charcoal on canvas

60 × 120 in  
152.4 × 304.8 cm

**West Wing Guest Room Corridor**

\$5,800



**DOROTHY FITZGERALD**

Totally at Peace, 2014  
Oil, charcoal on canvas

52 × 52 in  
132.1 × 132.1 cm



**A.J. FRIES**  
Window 2, 2008  
Oil on canvas  
  
40 × 60 in  
101.6 × 152.4 cm

**East Wing Guest Room Corridor**  
\$9,000



**PAM GLICK**  
Thank You For Having Me, 2015  
Oil on canvas  
  
72 × 72 in  
182.9 × 182.9 cm

**East Wing Guest Room Corridor**  
\$11,000



**PAM GLICK**  
2 Niagaras, 2016  
Oil and enamel on canvas  
  
38 × 60 in  
96.5 × 152.4 cm

**East Wing Guest Room Corridor**  
\$7,501



**ANI HOOVER**  
Astro Dot Net, 2012  
Cut painting( acrylic, and spray paint on Yupo paper) and zip ties

**East Wing Connector**  
\$3,000



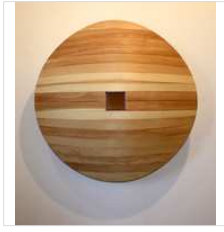
**KEVIN KEGLER**  
Flirtation with Surrender/Into the Tide, 2014  
Plaster & wooden wheel  
  
62 × 11 × 9 in  
157.5 × 27.9 × 22.9 cm

**West Wing Connector**  
\$2,500



**KEVIN KEGLER**  
House of Wish Fulfillment, 2010  
Oil, wax, copper, wood, funnel & wheel,  
  
70 × 24 × 15 1/2 in  
177.8 × 61 × 39.4 cm

**West Wing Connector**  
\$2,400



**KEVIN KEGLER**  
Sun and Forest, 2015  
White pine and copper leaf

47 1/2 × 47 1/2 × 12 1/2 in  
120.7 × 120.7 × 31.8 cm

**Lounge**  
\$8,000



**FELICE KOENIG**  
Cherry Fizz, 2009  
Acrylic on canvas

3 × 3 in  
7.6 × 7.6 cm

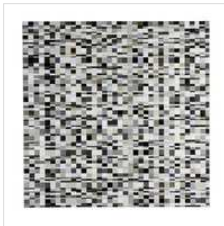
**Lounge**  
\$11,000



**FELICE KOENIG**  
Touch me, Touch me, Touch me , 2009  
Acrylic on canvas

3 × 3 in  
7.6 × 7.6 cm

**Lounge**  
\$11,000



**FELICE KOENIG**  
Travel as Equals, ( by Joseph Arthur), 2016  
Acrylic on canvas

12 × 12 in  
30.5 × 30.5 cm

**East Wing (elevator)**  
\$4,500



**MARK LAVATELLI**  
Hobson, 2017  
Encaustic on Panel

36 × 30 in  
91.4 × 76.2 cm

**West Wing Guest Room Corridor**  
\$3,400



**JOSEPH PICCILLO**  
Dancer with Chick , 2010  
Oil, graphite and collage on canvas

60 × 48 in  
152.4 × 121.9 cm

**East Wing Guest Room Corridor**  
\$18,000



**JOSEPH PICCILLO**  
Untitled 3, 2014  
Graphite and charcoal on canvas  
  
36 × 72 in  
91.4 × 182.9 cm

**East Wing Guest Room Corridor**  
\$18,000



**REINHARD REITZENSTEIN**  
Jeffrey Pine, 2016  
Pigma ink on Stonehenge paper

**West Wing Guest Room Corridor**  
\$7,000



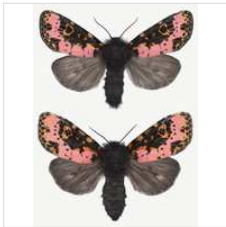
**REINHARD REITZENSTEIN**  
Torrey Pine, 2016  
Pigma ink on Stonehenge paper

**West Wing Guest Room Corridor**  
\$7,000



**JOSEPH SCHEER**  
Automeris Ronda,  
High resolution digital print on handmade paper

**West Wing Guest Room Corridor**  
\$2,100



**JOSEPH SCHEER**  
Xanthoportis Regnatrix,  
High resolution digital print on handmade paper

**West Wing Guest Room Corridor**  
\$2,100



**KATHLEEN SHERIN**  
4 knots, 2000  
Collagraphic Monoprint with chine collé

**East (outside yellow nook)**  
\$425

**East (outside yellow nook)**  
\$375



**KATHLEEN SHERIN**  
Blue Knot, 2000  
Collagraphic monoprint,

10 × 11 in  
25.4 × 27.9 cm

**West Wing Guest Room Corridor**  
\$2,800



**KATHLEEN SHERIN**  
Blues Melody, 1999  
Drypoint, variable relief monoprint

30 × 120 in  
76.2 × 304.8 cm

**East (outside yellow nook)**  
\$375



**KATHLEEN SHERIN**  
Knot, 2001  
Collagraphic Monoprint with chine collé

10 × 11 in  
25.4 × 27.9 cm

**West Wing Guest Room Corridor**  
\$1,400



**KATHLEEN SHERIN**  
Red Knots, Why nots, 2000  
Collagraphic Monoprint

21 × 42 in  
53.3 × 106.7 cm

**Lounge**  
\$10,001



**ALEXANDRA P. SPAULDING**  
tolerance (+ or -), 2015  
Mirror, neon

75 × 13 × 6 in  
190.5 × 33 × 15.2 cm

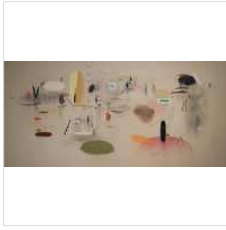
**East Wing Guest Room Corridor (elevator)**  
\$7,200



**JEFFREY VINCENT**  
Home?, 2016

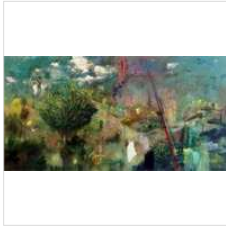
94 3/4 × 62 1/2 in  
240.7 × 158.8 cm





**JEFFREY VINCENT**  
Nile, 2016

**West Wing Guest Room Corridor**  
\$3,000



**JEFFREY VINCENT**  
Nymphs and Ghosts, 2017  
Acrylic on canvas  
  
72 × 36 in  
182.9 × 91.4 cm

**East Wing Guest Room Corridor**  
\$5,800